

# SKATE



COMFORT

SKATE  
TASK  
DRAUGHTSMAN  
TRAINING







# SKATE TASK

## OVERVIEW:

Designed for simplicity, Skate delivers functionality without fuss. Concealed, pictorial levers control the dynamic movement and height adjustment, while lumbar comfort can be adapted to suit. An optional inflatable lumbar feature can be added for increased support. The Skate Task chair offers comfort and style, and is an ingenious addition to the Comfort seating collection.

With intuitive buttons, it's easy to tailor the chair to suit most anthropometric measurements. The dynamic movement encourages blood flow and in turn, increased concentration and productivity, improving the wellbeing of the user.

The Skate Task is made from 81% recycled material, has Greenguard Gold Indoor Air Quality Certification and is 96% recyclable.

## FEATURES:

- ALUMINIUM ARM SUPPORTS
- INTEGRATED LEVER CONTROLS
- WATERFALL FRONT SEAT
- AUTOMATIC OR INFLATABLE LUMBAR SUPPORT
- HEIGHT AND ANGLE ARMREST ADJUSTMENTS
- SOFT TOUCH ARM PADS
- OPTIONAL AUTO-RETURN FEATURE (FOR MEETING OR CONFERENCE USE)
- CHOICE OF FOUR BASES
- TWO FRAME FINISHES
- ALL PARTS OF THE CHAIR ARE REPLACEABLE AND KEPT IN STOCK FOR LONGER LIFE-CYCLE









# SKATE DRAUGHTSMAN

## OVERVIEW:

Skate draughtsman has been designed to fill a void in the chair market for comfortable and flexible high-level seating. The ideal chair for environments where a raised seating solution is required – such as reception desks, raised workstations, lab settings, industrial working environments and office healthcare. An ideal sit-stand chair for agile working.

The Skate Draughtsman's cutting-edge, set back wing arm is particularly practical. This aluminium fixed arm offers ease of seat access, delivering maximum seating comfort with excellent freedom of movement.

The unique footplate has been designed not only for aesthetics but also for health and safety considerations. Unlike traditional footings, the Skate footplate reduces risk of feet catching.

Skate Draughtsman meets EN 1335 standards, is 96% recyclable and has Greenguard Gold Certification.

## FEATURES:

- ALUMINIUM ARM SUPPORTS
- INTEGRATED LEVER CONTROLS
- WATERFALL FRONT SEAT
- AUTOMATIC OR INFLATABLE LUMBAR SUPPORT
- SET-BACK WING ARMS
- CHOICE OF FOUR BASES
- TWO FRAME FINISHES
- CO-ORDINATED FOOTPLATE - DESIGNED TO MATCH ZB RANGE OF MESH
- ALL PARTS OF THE CHAIR ARE REPLACEABLE AND KEPT IN STOCK FOR LONGER LIFE-CYCLE



# SKATE TRAINING

## OVERVIEW:

Skate Training chair is the ideal solution for 21st century learning and agile working. Breathable mesh promotes healthier posture for greater support and comfort. This is combined with practical, built-in storage for bags and documents, a sturdy and adjustable tablet with park mode, a bottle holder, and colour co-ordinated castors for ease of mobility. The Skate Training chair has it all.

Designed specifically for education and training environments where endurance is demanded, Skate Training is also available in a wide range of finishes and colours. With a wealth of optional extras, Skate Training allows complete customisation.

Using up to 52% recycled material, it also boasts 97% recyclability, has Greenguard Gold Certification and meets BS EN 1729-2:2012 (Size 4~7).

## FEATURES:

- ADJUSTABLE TABLET
- ERGONOMIC ADJUSTABLE LUMBER SUPPORT
- OPTIONAL PUMP-UP LUMBAR SUPPORT
- AUTO-FLEX BACK
- WATERFALL FRONT SEAT
- INTEGRATED BAG STORAGE UNDER SEAT
- OPTIONAL CUPHOLDER
- CHOICE OF SEAT FRAME FINISHES
- CHOICE OF COLOUR-COORDINATED BASE INSETS AND CASTORS
- ALL PARTS OF THE CHAIR ARE REPLACEABLE AND KEPT IN STOCK FOR LONGER LIFE-CYCLE





# MODELS & OPTIONS

An extensive selection of soft and durable mesh, leather and fabric upholstery offers a variety of colour combinations to suit any environment. This stylish chair delivers outstanding comfort and innovation – the perfect example of form and function in harmony.

## MODELS



**TRAINING**



**DRAUGHTSMAN**



**TASK**

## TASK / DRAUGHTSMAN BASE OPTIONS



**POLISHED**



**PAINTED WHITE**



**PAINTED BLACK**



**NYLON**



**CASTORS**

NOT SUITABLE FOR DRAUGHTSMAN MODEL



**POLISHED GLIDES**



**BLACK GLIDES**

**UPHOLSTERY OPTIONS**

**FRAME OPTIONS**



**DRAUGHTSMAN / TRAINING ACCESSORIES**

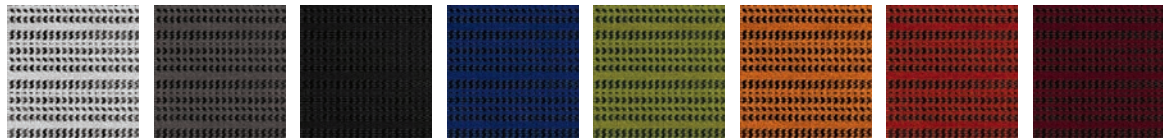




# UPHOLSTERY

Comfort are passionate about using mesh on our chairs due to their durability and ergonomic properties. In addition, we have selected a range of complementary leathers and fabrics to mix-and-match. Should you wish to upholster in an alternative material, we work with all the leading contract fabric suppliers and can advise of suitability – non stock items will increase lead times.

## KMD MESH



WHITE  
KMD36

GREY  
KMD30

BLACK  
KMD31

BLUE  
KMD35

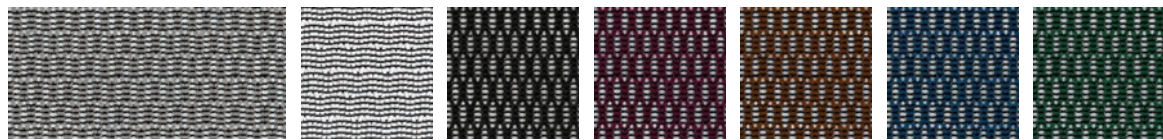
GREEN  
KMD34

ORANGE  
KMD33

RED  
KMD32

BURGUNDY  
KMD37

## W MESH



SILVER  
W09-53

WHITE  
W09-24

BLACK  
W09-01

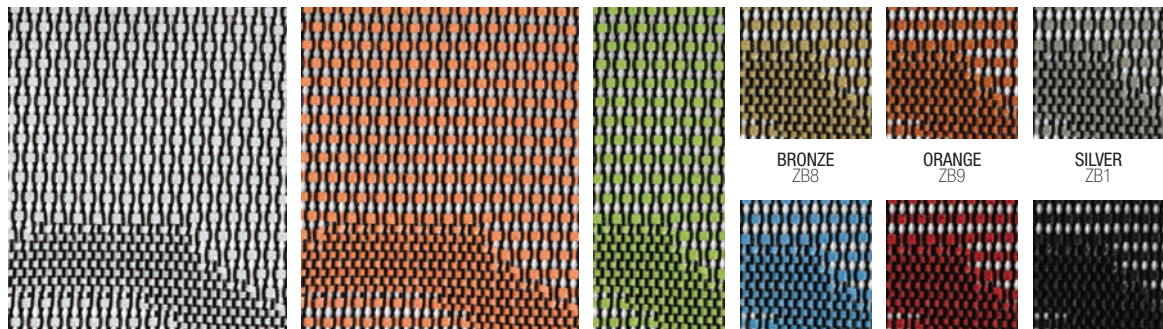
GRAPE  
W09-10

CHESTNUT  
W09-51

BLUE  
W09-18

FOREST GREEN  
W09-19

## ZB MESH



WHITE  
ZB7

TANGERINE  
ZB4

HERBAL GREEN  
ZB3

BRONZE  
ZB8

ORANGE  
ZB9

SILVER  
ZB1

SKY BLUE  
ZB5

RED  
ZB6

BLACK  
ZB2

## LEATHER (SEAT ONLY)



LIGHT TAN  
LE3902

LATTE  
LE7810

DARK BROWN  
LE8213

RED  
LE3310

ORANGE  
LEH007

BLACK  
LE2095

SNOW  
LEA2

HUNTER GREEN  
LE197

TEAL  
LE196

HEATHER  
LE1118

DARK BLUE  
LE70091



# CAMIRA XTREME (SEAT ONLY)



Due to printing limitations, all colours are approximate. Please contact us for actual samples.

# SKATE TECHSPEC

## TASK DRAUGHTSMAN TRAINING

### GREEN CREDENTIALS

#### GREENGUARD CERTIFICATION

GREENGUARD Certification standards have established performance-based standards to define products and processes with low chemical and particle emissions for use indoors.

GOLD

GOLD

GOLD

#### RECYCLABILITY

96%

96%

97%

#### MATERIAL ANALYSIS

PLASTIC

CONTENT RECYCLED  
82% 90%

CONTENT RECYCLED  
82% 90%

CONTENT RECYCLED  
50.6% 90%

ALUMINIUM ALLOY

- -

- -

41.8% 10%

STEEL

8.4% 80%

8.4% 80%

2.6% 80%

UPHOLSTERY

4.7% -

4.7% -

1.9% -

PU / FOAM

4.9% -

4.9% -

3.1% -

#### RECYCLED MATERIAL TOTAL

81%

81%

52%

### EDUCATIONAL CERTIFICATION

BS EN 1729-2:2012 (Size 4~7).

-

-

YES

### SKATE TASK DIMENSIONS



	mm
A	420 - 480
B	585 - 495
C	450 - 485
D	565 - 630
E	500
F	-
G	650

## SKATE DRAUGHTSMAN DIMENSIONS



	mm
A	420 - 480
B	585 - 495
C	450 - 485
D	565 - 630
E	500
F	-
G	635

## SKATE TRAINING DIMENSIONS



	mm
A	440 - 490
B	390 - 480
C	480
D	570 - 630
E	520
F	-
G	-

## DESIGNED BY YOU | CREATED BY COMFORT

### CHOOSE

Using over 35,000 images, Comfort's configurator provides an app allowing you to view our chair ranges and create the specification of your choosing.

### CUSTOMISE

Choose from a wide range of frame finishes, bases, upholstery options & colours, and accessories to create your own, unique chair.

### DOWNLOAD

Featuring high resolution image downloads suitable for printed literature – simply configure your chair then select the download format options and size you require.

www.scaune.ro

Antares România

Cluj-Napoca

Str. Piata 1 Mai nr. 4-5

tel.: +40 264 454 550

e-mail: antares@scaune.ro

Bucuresti

Int. Rocilor, 12-16, Sector 6

tel.: +40 213 615 151

