



COMFORT



Li





# Lii SEATING INNOVATION

## OVERVIEW:

Lii offers a flexible range of lightweight and versatile guest seating to complement our range of office chairs.

The Lii four-legged guest chair provides a sleek nesting solution for the design-led or space conscious environment and is available with castors or glides, while the cantilever guest chair is the perfect pull-up chair for meetings, guests, reception areas, conferences or breakout areas.

Both chairs feature an automatic body-responsive flexible back to mould to the body contours. This is delivered via the chair's dynamic pivot mechanism which helps encourage blood flow and therefore enhances concentration and productivity.

## FEATURES:

- NESTING 4-LEG DESIGN
- CANTILEVER OPTION
- BODY-RESPONSIVE FLEXIBLE BACK
- CASTORS OR GLIDES
- THREE FRAME FINISHES
- CHOICE OF MESH, FABRIC & LEATHER UPHOLSTERY OPTIONS
- 98% RECYCLABLE





# MODELS & OPTIONS

Available in a four-legged or cantilever design with a choice of environmentally-friendly black, white or a classic polished frame and castor or glide options.

## MODELS



**4 LEG VISITOR WITH CASTORS**



**4 LEG VISITOR WITH 2 CASTORS, 2 GLIDES**



**4 LEG VISITOR WITH 4 GLIDES**



**CANTILEVER VISITOR**

**SEAT OPTIONS**



**WHITE SEAT FRAME - POLISHED BASE**



**WHITE SEAT FRAME - BLACK BASE**



**WHITE SEAT FRAME - WHITE BASE**



**BLACK SEAT FRAME - POLISHED BASE**



**BLACK SEAT FRAME - BLACK BASE**



**BLACK SEAT FRAME - WHITE BASE**

**UPHOLSTERY OPTIONS**



**BACK  
SEAT**

**MESH  
MESH**



**MESH  
LEATHER**

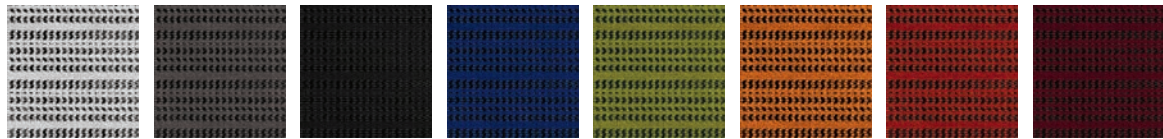


**MESH  
FABRIC**

# UPHOLSTERY

Comfort are passionate about using mesh on our chairs due to their durability and ergonomic properties. In addition, we have selected a range of complementary leathers and fabrics to mix-and-match. Should you wish to upholster in an alternative material, we work with all the leading contract fabric suppliers and can advise of suitability – non stock items will increase lead times.

## KMD MESH



WHITE  
KMD36

GREY  
KMD30

BLACK  
KMD31

BLUE  
KMD35

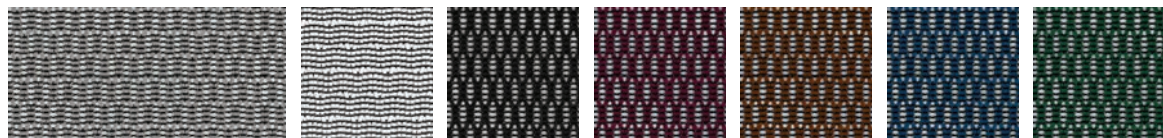
GREEN  
KMD34

ORANGE  
KMD33

RED  
KMD32

BURGUNDY  
KMD37

## W MESH



SILVER  
W09-53

WHITE  
W09-24

BLACK  
W09-01

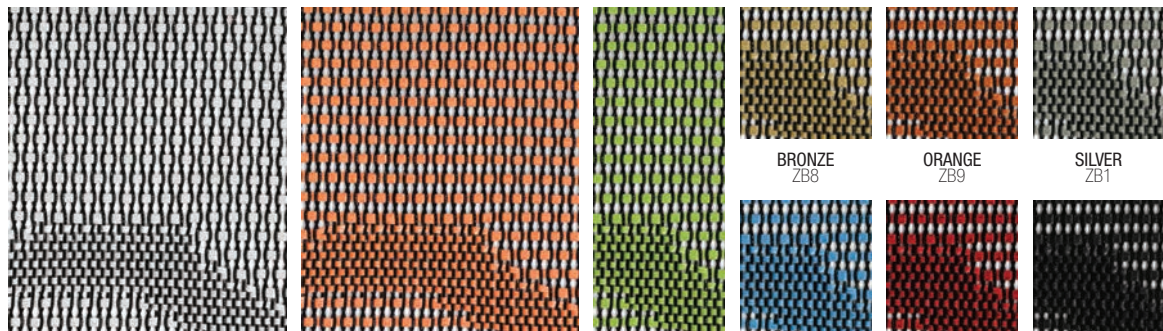
GRAPE  
W09-10

CHESTNUT  
W09-51

BLUE  
W09-18

FOREST GREEN  
W09-19

## ZB MESH



WHITE  
ZB7

TANGERINE  
ZB4

HERBAL GREEN  
ZB3

BRONZE  
ZB8

ORANGE  
ZB9

SILVER  
ZB1

SKY BLUE  
ZB5

RED  
ZB6

BLACK  
ZB2

## LEATHER (SEAT ONLY)



LIGHT TAN  
LE3902

LATTE  
LE7810

DARK BROWN  
LE8213

RED  
LE3310

ORANGE  
LEH007

BLACK  
LE2095

SNOW  
LEA2

HUNTER GREEN  
LE197

TEAL  
LE196

HEATHER  
LE1118

DARK BLUE  
LE70091



# CAMIRA XTREME (SEAT ONLY)



Due to printing limitations, all colours are approximate. Please contact us for actual samples.

# Li TECHSPEC

	Li 4 LEG		Li CANTILEVER	
<b>GREEN CREDENTIALS</b>				
<b>GREENGUARD CERTIFICATION</b> GREENGUARD Certification standards have established performance-based standards to define products and processes with low chemical and particle emissions for use indoors.	GOLD		GOLD	
<b>RECYCLABILITY</b>	98%		98%	
<b>MATERIAL ANALYSIS</b>	<b>CONTENT</b>	<b>RECYCLED</b>	<b>CONTENT</b>	<b>RECYCLED</b>
PLASTIC	52.3%	90%	41.6%	90%
STEEL	42.6%	80%	2.8%	80%
UPHOLSTERY	3.2%	-	2.8%	-
PU / FOAM	1.9%	-	1.7%	-
<b>RECYCLED MATERIAL TOTAL</b>	<b>81%</b>		<b>81%</b>	

## CERTIFICATION

### EN 1335-2:2009

PART 2

PART 3

Office furniture. Office work chair.  
Safety requirements.

YES

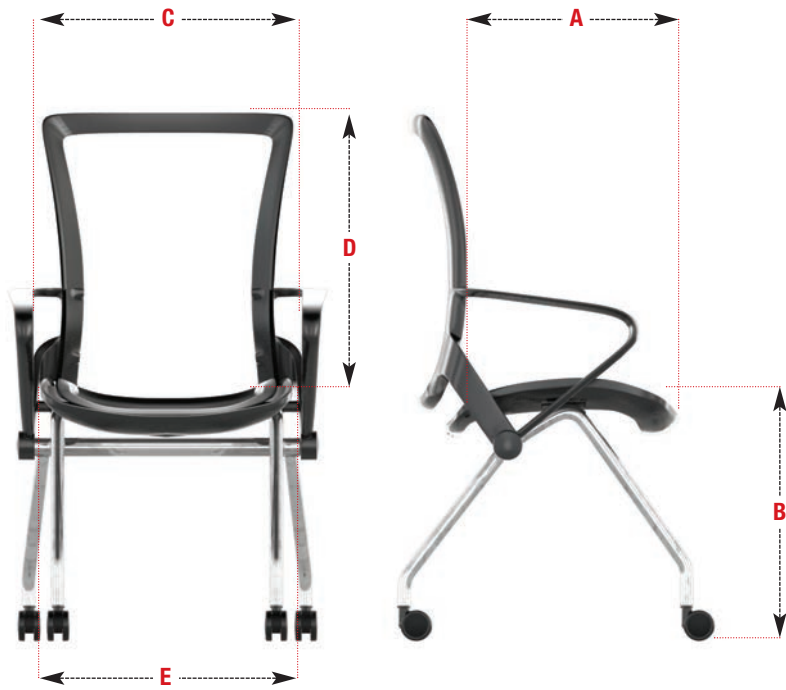
YES

YES

YES

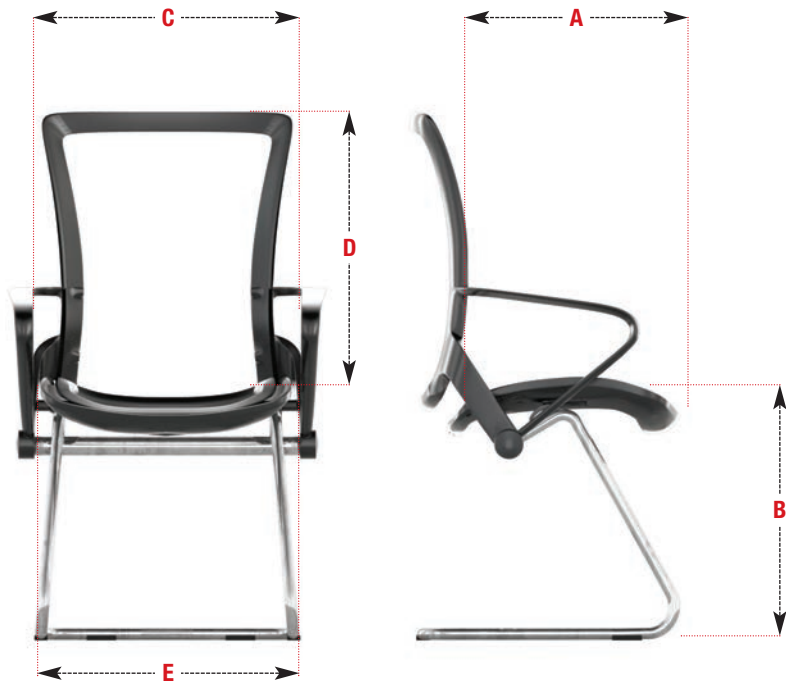


## Lii FOUR LEG VISITOR DIMENSIONS



	mm
A	450
B	485
C	500
D	505
E	490

## Lii CANTILEVER VISITOR DIMENSIONS



	mm
A	450
B	485
C	500
D	505
E	500

www.scaune.ro

Antares România

Cluj-Napoca

Str. Piata 1 Mai nr. 4-5

tel.: +40 264 454 550

e-mail: antares@scaune.ro

Bucuresti

Int. Rocilor, 12-16, Sector 6

tel.: +40 213 615 151

