

# ERGOHUMAN



COMFORT





# ERGOHUMAN



# ERGOHUMAN ADVANCED ENGINEERING



Designed and manufactured in-house by Comfort, we control 100% of the design and manufacturing processes from concept to creation.

The Ergohuman range is a perfect fusion of art and science, featuring flex zones that ensure constant support of back and lumbar, adjustable arm rests for unparalleled support and a height-adjustable, pivoting headrest for full cranial support.

Ergohuman is ideal for those who are in an office chair for long periods of time and who require intensive use seating. With advanced aesthetics, form and function, this ergonomic chair utilises a twin-pivot or synchro-tilt mechanism delivering ultimate adjustability for all users. The Ergohuman can be used as 24/7 seating and is certified to EU standard EN 5459.







# ERGOHUMAN LUXURY



## OVERVIEW:

The Ergohuman Plus Luxury model takes our top selling chair to new levels, with enhanced aluminium detailing, an independent forward seat tilt function and a deluxe five-star base. Ergohuman Plus Luxury is the ideal high-end executive office chair.

Using the ingeniously simple single lever control to operate the three most frequently used chair functions - seat height, seat depth and back tilt can all be operated from a single point of contact. Arms are cleverly integrated into the rear of the mechanism to allow closer-to-desk working.

The Ergohuman Luxury also boasts 98% recyclability, has Greenguard Gold Certification and meets EN 5459, EN 1335-2:2009 and EN 1335-3:2009.

Available in a choice of mesh, fabric or leather with polished aluminium frame and base.

## FEATURES:

- ALUMINIUM DETAILING
- SINGLE LEVER CONTROL
- TWIN PIVOT CONTROL MECHANISM
- DUAL SPRING TECHNOLOGY
- INDEPENDENT 5° FORWARD SEAT TILT
- SEAT SLIDE
- ENHANCED WATERFALL FRONT SEAT
- SEAT PRESSURE REDUCTION INSETS
- AUTOMATIC LUMBAR SUPPORT
- LOCKING HEIGHT, ANGLE, WIDTH & DEPTH
- ARMREST ADJUSTMENTS
- OPTIONAL HEADREST WITH HEIGHT AND ANGLE ADJUSTMENT
- ALL PARTS OF THE CHAIR ARE REPLACEABLE AND KEPT IN STOCK FOR LONGER LIFE-CYCLE











# ERGOHUMAN ELITE



## OVERVIEW:

The Ergohuman Plus Elite boasts all the main features of the Luxury model but with slightly less aluminium detailing and without the seat forward tilt to target a wider market.

Using our patented single lever control to operate the three most frequently used chair functions - seat height, seat depth and back tilt can all be operated from a single point of contact. Arms are cleverly integrated into the rear of the mechanism to allow closer-to-desk working.

The Ergohuman Elite also boasts 98% recyclability, has Greenguard Gold Certification and meets EN 5459, EN 1335-2:2009 and EN 1335-3:2009.

Available in a choice of mesh, fabric or leather with polished aluminium frame and a choice of bases.

## FEATURES:

- SINGLE LEVER CONTROL
- TWIN PIVOT CONTROL MECHANISM
- DUAL SPRING TECHNOLOGY
- SEAT SLIDE
- ENHANCED WATERFALL FRONT SEAT
- SEAT PRESSURE REDUCTION INSETS
- AUTOMATIC LUMBAR SUPPORT
- LOCKING HEIGHT, ANGLE, WIDTH & DEPTH
- ARMREST ADJUSTMENTS
- OPTIONAL HEADREST WITH HEIGHT AND ANGLE ADJUSTMENT
- OPTIONAL COAT-HANGER
- ALL PARTS OF THE CHAIR ARE REPLACEABLE AND KEPT IN STOCK FOR LONGER LIFE-CYCLE



# ERGOHUMAN CLASSIC



## OVERVIEW:

Our most popular European model – the Ergohuman Classic – features more slimline aluminium detailing to enhance its value in the marketplace.

The simple-to-use single lever control operates the three most frequently used chair functions – seat height, seat depth and back tilt can all be operated from a single point of contact.

The Ergohuman also boasts 97% recyclability, has Greenguard Gold Certification and meets EN 5459, EN 1335-2:2009 and EN 1335-3:2009.

Available in a choice of mesh, fabric or leather with polished aluminium frame and base.

## FEATURES:

- SINGLE LEVER ADJUSTMENT
- TENSION CONTROL
- TILT LOCK
- AUTOMATIC LUMBAR SUPPORT
- SYNCHRO-TILT MECHANISM
- SEAT HEIGHT ADJUSTMENT
- WATERFALL SEAT
- BACK HEIGHT ADJUSTMENT
- SEAT DEPTH ADJUSTMENT
- ARM HEIGHT, DEPTH & SWIVEL ADJUSTMENT
- OPTIONAL HEADREST WITH HEIGHT AND ANGLE ADJUSTMENT
- OPTIONAL COAT-HANGER
- ALL PARTS OF THE CHAIR ARE REPLACEABLE AND KEPT IN STOCK FOR LONGER LIFE-CYCLE





# ERGOHUMAN SEATING INNOVATION

For a full technical specification, please see page 18-19

## **OPTIONAL HEADREST**

The headrest can be tilted and height-adjusted to suit the user's individual requirements.

## **BACK HEIGHT**

Raise or lower the chair's back to support the user's back and lumbar region.

## **LUMBAR SUPPORT**

The Ergohuman boasts a patented lumbar system which, unlike traditional chairs, delivers comprehensive lumbar coverage and unrivalled support in every recline position. This promotes a more natural pelvic alignment and helps reduce musculoskeletal complications. A pre-tensioned metal connector provides automatic resistance to the user's lower back which varies with seating positions.

## **WATERFALL FRONT / SEAT PRESSURE REDUCTION** (Luxury & Elite)

The rounded front seat is designed to reduce pressure points on the underside of user's thighs. In addition, foam panels surround both front and sides of the seat for greater pressure distribution.

## **SEAT HEIGHT**

Raise or lower the chair's seat height to fit the individual user's anthropometric measurements.

## **SEAT SLIDE & TILT\*** (\*Tilt on Luxury only)

This feature allows depth adjustment of the seat to accommodate the length of the user's legs and on the Luxury (EHPL) model, provides up to 5° independent forward tilt.

## **TWIN-PIVOT MECHANISM** (Luxury & Elite)

This patented dual pivot technology offers more movement and constant support with minimal pressure on the underside of the thighs (first pivot point behind the user's knees and the second point under the ischial tuberosities). This encourages continuous supported body movement, therefore increasing blood circulation and reducing fatigue. An additional lock allows the user to recline in a range of positions. Dual spring engineering helps the user to find the perfect resistance for their weight, and delivers a smooth and comfortable recline action.

## **POLISHED BASE**

A choice of two polished aluminium five-star bases with 60 or 65 mm nylon castors.



**ARMRESTS (Classic)**

Height (10 point), depth and angle adjustment.

**MECHANISM (Classic)**

Single lever control allows back to recline to a 2:1 back-to-seat ratio for personalised comfort and support.

**TENSION CONTROL (Classic)**

Adjusts tension of the mechanism to support the user's weight when in dynamic mode.



**ARMRESTS (Luxury & Elite)**

Height (8 position lock), width, angle and depth adjustable to allow forearms to rest comfortably whilst taking the weight off your shoulders.

**SINGLE LEVER MECHANISM (Luxury & Elite)**

Ingeniously simple single lever control to operate the seat height, depth, & tilt\*, and back tilt functions.

**TENSION CONTROL (Luxury & Elite)**

Adjusts back tension to allow the back to tilt comfortably supporting the user's body weight when reclining.

# MODELS & OPTIONS

The Ergohuman is designed for both aesthetic impact and ergonomic excellence. An extensive selection of soft and durable mesh, leather and fabric upholstery offers a variety of colour combinations to suit any environment. This stylish chair delivers outstanding ergonomic comfort and stylish innovation – the perfect example of form and function in complete harmony.

For complementary visitor seating, see Comfort Europe's Lii visitor chair.

---

## MODELS

---



**LUXURY**



**ELITE**



**CLASSIC**

---

## INTERCHANGEABLE BASE OPTIONS

---



**DELUXE**



**STANDARD**



## UPHOLSTERY OPTIONS

					
<b>HEADREST</b>	MESH	LEATHER	FABRIC	MESH	MESH
<b>BACK</b>	MESH	LEATHER	FABRIC	MESH	MESH
<b>SEAT</b>	MESH	LEATHER	FABRIC	LEATHER	FABRIC

					
<b>BACK</b>	MESH	LEATHER	FABRIC	MESH	MESH
<b>SEAT</b>	MESH	LEATHER	FABRIC	LEATHER	FABRIC

## ADDITIONAL OPTIONS



**COAT-HANGER\* / BLACK GLIDES**

\*COAT-HANGER CURRENTLY NOT AVAILABLE ON LUXURY MODEL



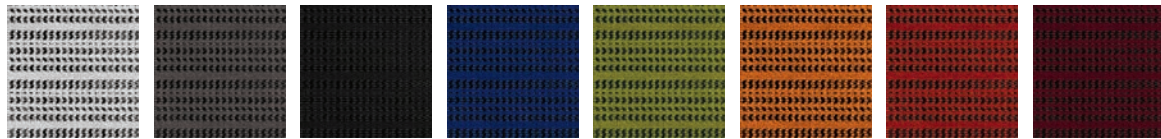
**NOTEBOOK STAND\*\* / LEGREST\*\* / POLISHED GLIDES**

\*\*NOTEBOOK & LEGREST NOT AVAILABLE ON CLASSIC MODEL

# UPHOLSTERY

Comfort are passionate about using mesh on our chairs due to their durability and ergonomic properties. In addition, we have selected a range of complementary leathers and fabrics to mix-and-match. Should you wish to upholster in an alternative material, we work with all the leading contract fabric suppliers and can advise of suitability – non stock items will increase lead times.

## KMD MESH



WHITE  
KMD36

GRAY  
KMD30

BLACK  
KMD31

BLUE  
KMD35

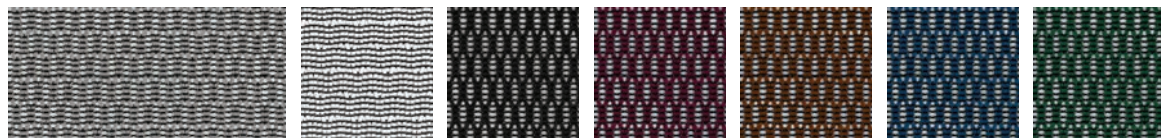
GREEN  
KMD34

ORANGE  
KMD33

RED  
KMD32

BURGUNDY  
KMD37

## W MESH



SILVER  
W09-53

WHITE  
W09-24

BLACK  
W09-01

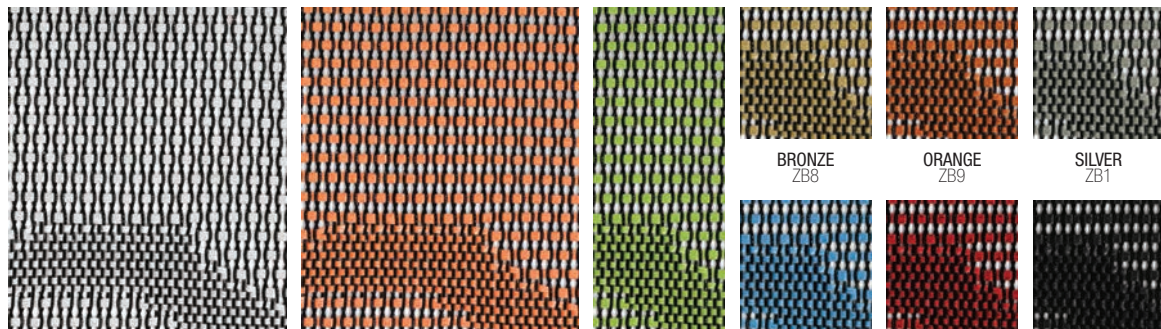
GRAPE  
W09-10

CHESTNUT  
W09-51

BLUE  
W09-18

FOREST GREEN  
W09-19

## ZB MESH



WHITE  
ZB7

TANGERINE  
ZB4

HERBAL GREEN  
ZB3

SKY BLUE  
ZB5

RED  
ZB6

BLACK  
ZB2

## LEATHER



LIGHT TAN  
LE3902

LATTE  
LE7810

DARK BROWN  
LE8213

RED  
LE3310

ORANGE  
LEH007

BLACK  
LE2095



# CAMIRA XTREME



Due to printing limitations, all colours are approximate. Please contact us for actual samples.

# ERGOHUMAN TECHSPEC

	LUXURY	ELITE	CLASSIC
<b>GREEN CREDENTIALS</b>			
<b>GREENGUARD CERTIFICATION</b> GREENGUARD Certification standards have established performance-based standards to define products and processes with low chemical and particle emissions for use indoors.	GOLD	GOLD	GOLD
<b>RECYCLABILITY</b>	98%	98%	97%
<b>MATERIAL ANALYSIS</b>	<b>CONTENT RECYCLED</b>	<b>CONTENT RECYCLED</b>	<b>CONTENT RECYCLED</b>
PLASTIC	31.3% 90%	31.3% 90%	42% 90%
ALUMINIUM ALLOY	60.1% 10%	60.1% 10%	35% 10%
STEEL	5% 80%	5% 80%	19% 80%
UPHOLSTERY	0.9% -	0.9% -	1% -
PU / FOAM	2.7% -	2.7% -	4% -
<b>RECYCLED MATERIAL TOTAL</b>	<b>38%</b>	<b>38%</b>	<b>57%</b>
<b>CERTIFICATION</b>			
<b>EN 1335-2:2009</b>			
PART 2	YES	YES	YES
PART 3	YES	YES	YES
Office furniture. Office work chair. Safety requirements.			
<b>EN 5459-2:2008</b>	YES	YES	YES
Specification for performance requirements and tests for office furniture. Office pedestal seating for use by persons weighing up to 150kg and for use up to 24 hours a day, including type-approval tests for individual components.			



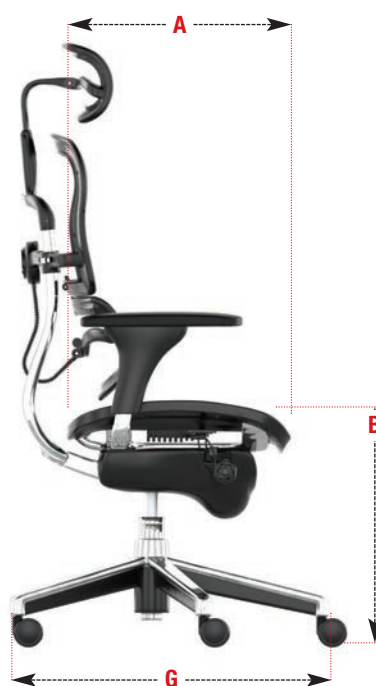


## ERGOHUMAN PLUS LUXURY / ELITE DIMENSIONS



	mm
<b>A</b>	420 - 480
<b>B</b>	585 - 495
<b>C</b>	450 - 485
<b>D</b>	565 - 630
<b>E</b>	500
<b>F</b>	175 - 220
<b>G</b>	650

## ERGOHUMAN CLASSIC DIMENSIONS



	mm
<b>A</b>	440 - 490
<b>B</b>	390 - 480
<b>C</b>	480
<b>D</b>	570 - 630
<b>E</b>	520
<b>F</b>	175 - 220
<b>G</b>	645

www.scaune.ro

Antares România

Cluj-Napoca

Str. Piata 1 Mai nr. 4-5

tel.: +40 264 454 550

e-mail: antares@scaune.ro

Bucuresti

Int. Rocilor, 12-16, Sector 6

tel.: +40 213 615 151

