

# ENJOY



COMFORT





# ENJOY



# ENJOY ADVANCED ENGINEERING



The Enjoy range brings design and ergonomics to luxury seating. Sharing many of the features of our top-range Ergohuman models, the Enjoy office chair provides intensive comfort. With unique integrated lumbar support and a range of adjustments available by using the ingeniously simple single lever control to provide personalised comfort, the Enjoy chair is designed for the needs of individuals and organisations.

Enjoy's incredible value, organic curves, versatile frame and complete adjustability makes it one of the most desirable office chairs on the market.

Certified to EU standard EN 5459, Enjoy is ideal for those who are in an office chair for long periods of time and require intensive use seating. Aesthetics, form and function allow this ergonomic chair to utilise a twin-pivot, synchro-tilt or automatic movement mechanism and offers ultimate adjustability for all users.







# ENJOY ELITE



## OVERVIEW:

Aesthetics, form and function allow this ergonomic chair to utilise our in-house-designed twin pivot mechanism. This delivers outstanding movement and constant support with minimal pressure on the underside of the thighs (first pivot point is located behind the user's knees and the second point under the ischial tuberosity).

With Dual Spring Technology for a smoother action; tilt mechanism with 4 position lock; seat slide and pneumatic height adjustment; height, depth, width and angle adjustable arms and optional 2D headrest, the adjustability of Enjoy Elite makes for a very unique ergonomic chair.

The Enjoy chair is 97% recyclable, has Greenguard Gold Certification, is EN 5459-2:2008 certified and meets EN 1335-2:2009 and EN 1335-3:2009.

Available in a choice of mesh, fabric or leather with a black frame and polished aluminium base.

## FEATURES:

- ALUMINIUM DETAILING
- EXTENDED SINGLE LEVER CONTROL
- TWIN PIVOT CONTROL MECHANISM
- DUAL SPRING TECHNOLOGY
- SEAT SLIDE
- ENHANCED WATERFALL FRONT SEAT
- SEAT PRESSURE REDUCTION INSETS
- INTEGRATED LUMBAR SUPPORT
- LOCKING HEIGHT, ANGLE, WIDTH & DEPTH
- ARMREST ADJUSTMENTS
- OPTIONAL HEADREST WITH HEIGHT AND ANGLE ADJUSTMENT
- ALL PARTS OF THE CHAIR ARE REPLACEABLE AND KEPT IN STOCK FOR LONGER LIFE-CYCLE















# ENJOY CLASSIC



## OVERVIEW:

The Enjoy Classic features the same smart lumbar technology featured in the Elite model offering exceptional ergonomic support.

Simple-to-use syncro mechanism on a 2:1 ratio allows the user to intuitively adjust the chair with a pictorial tension control on the right hand side.

An intuitive single lever control operates the three most frequently used chair functions – seat height, seat depth and back tilt can all be operated from a single point of contact. 3D multi-functional arms with soft-touch pads are also removable without affecting the chair's design.

The Enjoy Classic also boasts 95% recyclability, has Greenguard Gold Certification and meets EN 1335-2:2009 and EN 1335-3:2009. Available in a choice of mesh, fabric or leather with polished aluminium frame and base.

## FEATURES:

- SINGLE LEVER ADJUSTMENT
- TENSION CONTROL
- TILT LOCK
- INTEGRATED LUMBAR SUPPORT
- BACK ANGLE ADJUSTMENT
- SYNCHRO-TILT MECHANISM
- SEAT HEIGHT ADJUSTMENT
- WATERFALL SEAT
- BACK HEIGHT ADJUSTMENT
- SEAT DEPTH ADJUSTMENT
- ARM HEIGHT, DEPTH & SWIVEL ADJUSTMENT
- OPTIONAL HEADREST WITH HEIGHT AND ANGLE ADJUSTMENT
- ALL PARTS OF THE CHAIR ARE REPLACEABLE AND KEPT IN STOCK FOR LONGER LIFE-CYCLE



# PROJECT ENJOY



## OVERVIEW:

The beauty of Project Enjoy lies in its simplicity. Designed to be one of the most intuitive chairs on the market, it delivers superb ergonomic value and flexibility. Suitable for all users, it's the perfect solution for large organisations and agile working environments.

The single lever provides full control of the chair's features in four simple movements. This allows fast set-up with auto-adjustment to suit the weight of any user. The weight-balance mechanism auto-calibrates the recline resistance to suit each user when in dynamic mode.

With this intuitive single level control, automatic weight balance mechanism, integrated lumbar support and breathable mesh, the Project Enjoy delivers a stylish and affordable specification chair without compromising on design or functionality.

## FEATURES:

- FULLY AUTOMATIC WEIGHT BALANCE TENSION MECHANISM
- SINGLE LEVER TECHNOLOGY ACTIVATING HEIGHT, SEAT DEPTH AND BACK LOCK ADJUSTMENT
- INTEGRATED LUMBAR SUPPORT
- SEAT SLIDE
- ENHANCED WATERFALL FRONT SEAT
- SEAT PRESSURE REDUCTION INSETS
- LOCKING MULTI-FUNCTIONAL ARMS WITH SOFT-TOUCH PADS - REMOVABLE WITHOUT AFFECTING CHAIR STYLING.
- OPTIONAL 2D HEADREST WITH ANGLE AND HEIGHT ADJUSTMENT
- BLACK NYLON BASE WITH 60 MM CASTORS
- ALL PARTS OF THE CHAIR ARE REPLACEABLE AND KEPT IN STOCK FOR LONGER LIFE-CYCLE





# ENJOYELITE SEATING INNOVATION

For a full technical specification, please see page 22-23

## **OPTIONAL HEADREST**

The headrest can be tilted and height-adjusted to suit the user's individual requirements.

## **BACK HEIGHT**

Raise or lower the chair's backrest to support the user's back and lumbar region.

## **LUMBAR SUPPORT**

The Enjoy boasts an integrated lumbar system which, unlike traditional chairs, delivers constant lumbar support. This feature helps reduce musculoskeletal complications, increasing workplace well-being.

## **SEAT HEIGHT**

Raise or lower the chair's seat height to fit the individual user's anthropometric measurements.

## **SEAT SLIDE**

This feature allows depth adjustment of the seat to accommodate the length of the user's legs.

## **POLISHED BASE**

Polished aluminium five-star base with 60 mm nylon castors.



#### **TWIN-PIVOT MECHANISM**

Comfort's patented dual pivot technology offers more movement and constant support with minimal pressure on the underside of the thighs (first pivot point is located behind the user's knees and the second point under the ischial tuberosity). This encourages continuous supported body movement, therefore increasing blood circulation and reducing fatigue. An additional lock allows the user to recline in a range of positions.

Dual spring engineering helps the user to find the perfect resistance for their weight, and delivers a smooth and comfortable recline action.

#### **TENSION CONTROL**

Adjusts tension of the mechanism to support the user's weight when in dynamic mode.



#### **ARMRESTS**

Height (8 position lock), width, angle and depth adjustable to allow forearms to rest comfortably whilst taking the weight off the user's shoulders.

#### **ENHANCED WATERFALL FRONT / SEAT PRESSURE REDUCTION**

The rounded front seat is designed to reduce pressure points on the underside of user's thighs. In addition, foam panels surround both front and sides of the seat for greater pressure distribution.

#### **EXTENDED SINGLE LEVER MECHANISM**

Ingeniously simple single lever control to operate the seat height, depth and back tilt functions.



# ENJOY PROJECT & CLASSIC

For a full technical specification, please see page 22-23

## **OPTIONAL HEADREST**

The headrest can be tilted and height-adjusted to suit the user's individual requirements.

## **BACK HEIGHT**

Raise or lower the chair's back to support the user's back and lumbar region.

## **LUMBAR SUPPORT**

The Enjoy Classic and Project Enjoy boast a patented lumbar system which, unlike traditional chairs, delivers constant lumbar support. This feature helps reduce musculoskeletal complications, increasing workplace well-being.

## **SEAT HEIGHT**

Raise or lower the chair's seat height to fit the individual user's anthropometric measurements.

## **SEAT SLIDE**

This feature allows depth adjustment of the seat to accommodate the length of the user's legs.

## **MECHANISM (Classic)**

Single lever control allows back to recline to a 2:1 back-to-seat ratio for personalised comfort and support.

## **FIVE-STAR BASE**

Enjoy Classic and Elite feature a polished five-star base with 60 mm castors as standard.

Project Enjoy features a black nylon base as standard but can be upgraded to the aluminium base on request.

**AUTOMATIC TENSION** (Project)

Integrated weight-balance technology means that the chair will automatically adjust to the user's weight.

**ARMRESTS** (Project)

Height (6 position lock), angle and depth adjustable to allow forearms to rest comfortably. These arms are removable without affecting the design of chair.

**ENHANCED WATERFALL FRONT / SEAT PRESSURE REDUCTION**

The rounded front seat is designed to reduce pressure points on the underside of user's thighs. In addition, foam panels surround both front and sides of the seat for greater pressure distribution.

**MECHANISM** (Project)

Single lever control allows back to recline to a 2:1 back-to-seat ratio for personalised comfort and support. Locks to three positions.

**ARMRESTS** (Classic)

Height (6 position lock), angle and depth adjustable to allow forearms to rest comfortably whilst taking the weight off your shoulders. Removable without affecting the design of chair.

**WATERFALL FRONT**

The rounded front seat is designed to reduce pressure points on the underside of user's thighs.

**SINGLE LEVER MECHANISM**

Ingeniously simple single lever control to operate the seat height, depth and back tilt functions.

# MODELS & OPTIONS

The Enjoy is designed for both aesthetic impact and ergonomic excellence. An extensive selection of soft and durable mesh, leather and fabric upholstery offers a variety of colour combinations to suit any environment. This stylish chair delivers outstanding ergonomic comfort and stylish innovation – the perfect example of form and function in complete harmony.

For complementary visitor seating, see Comfort Europe's Lii visitor chair.

---

## MODELS



**ELITE**



**CLASSIC**



**PROJECT**

---

## BASE OPTIONS



**POLISHED**



**NYLON**



# UPHOLSTERY OPTIONS

					
<b>HEADREST</b>	MESH	LEATHER	FABRIC	MESH	MESH
<b>BACK</b>	MESH	LEATHER	FABRIC	MESH	MESH
<b>SEAT</b>	MESH	LEATHER	FABRIC	LEATHER	FABRIC

					
<b>BACK</b>	MESH	LEATHER	FABRIC	MESH	MESH
<b>SEAT</b>	MESH	LEATHER	FABRIC	LEATHER	FABRIC

# ADDITIONAL OPTIONS



**LEGREST\* / POLISHED GLIDES**  
\*LEGREST ONLY AVAILABLE ON ELITE MODEL

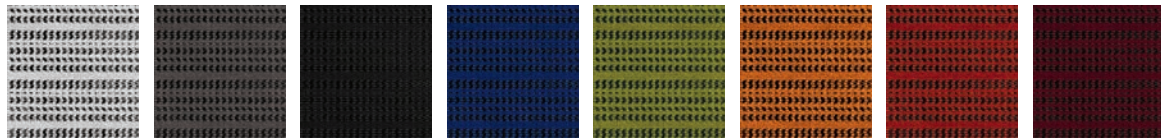


**NOTEBOOK STAND\*\* / BLACK GLIDES**  
\*\*NOTEBOOK STAND ONLY AVAILABLE ON ELITE MODEL

# UPHOLSTERY

Comfort are passionate about using mesh on our chairs due to their durability and ergonomic properties. In addition, we have selected a range of complementary leathers and fabrics to mix-and-match. Should you wish to upholster in an alternative material, we work with all the leading contract fabric suppliers and can advise of suitability – non stock items will increase lead times.

## KMD MESH



WHITE  
KMD36

GREY  
KMD30

BLACK  
KMD31

BLUE  
KMD35

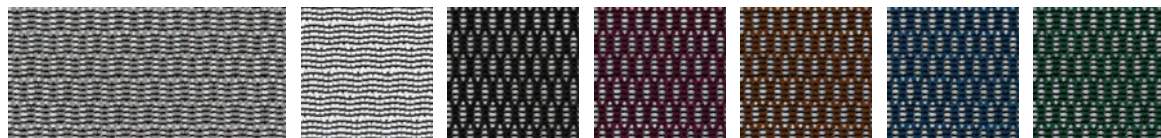
GREEN  
KMD34

ORANGE  
KMD33

RED  
KMD32

BURGUNDY  
KMD37

## W MESH



SILVER  
W09-53

WHITE  
W09-24

BLACK  
W09-01

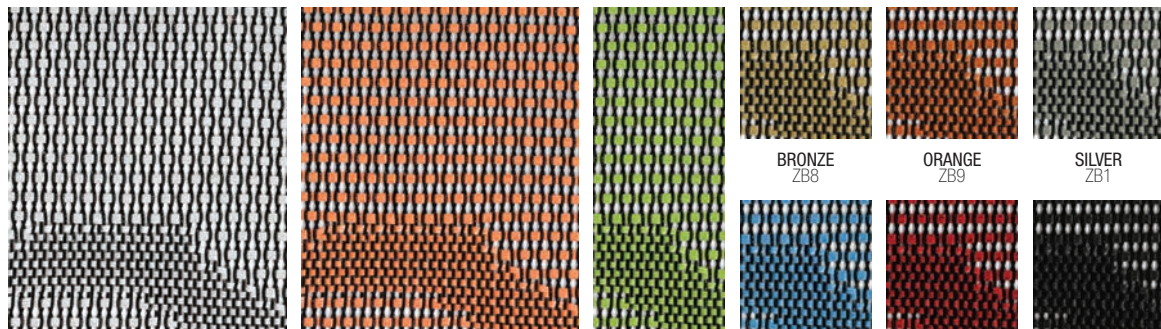
GRAPE  
W09-10

CHESTNUT  
W09-51

BLUE  
W09-18

FOREST GREEN  
W09-19

## ZB MESH



WHITE  
ZB7

TANGERINE  
ZB4

HERBAL GREEN  
ZB3

SKY BLUE  
ZB5

RED  
ZB6

BLACK  
ZB2

## LEATHER



LIGHT TAN  
LE3902

LATTE  
LE7810

DARK BROWN  
LE8213

RED  
LE3310

ORANGE  
LEH007

BLACK  
LE2095

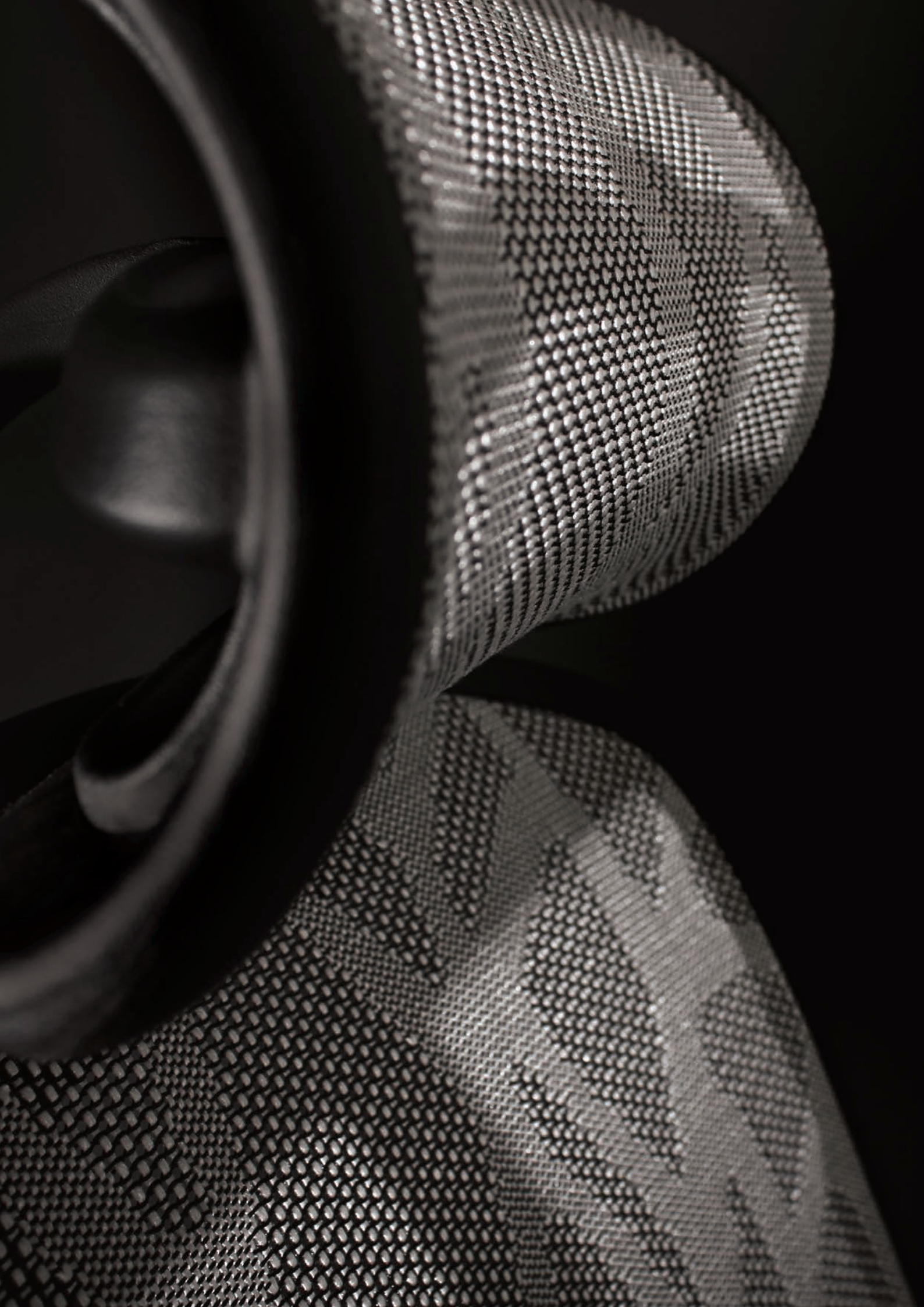


# CAMIRA XTREME



Due to printing limitations, all colours are approximate. Please contact us for actual samples.





# ENJOY CUSTOMISATION

**DESIGNED BY YOU** | CREATED BY COMFORT



## CHOOSE

Using over 35,000 images, Comfort's configurator provides an app allowing you to view our chair ranges and create the specification of your choosing.

## CUSTOMISE

Choose from a wide range of frame finishes, bases, upholstery options & colours, and accessories to create your own, unique chair.

## DOWNLOAD

Featuring high resolution image downloads suitable for printed literature – simply configure your chair then select the download format options and size you require.



# ENJOY TECHSPEC

	ELITE	CLASSIC	PROJECT
<b>GREEN CREDENTIALS</b>			
<b>GREENGUARD CERTIFICATION</b> GREENGUARD Certification standards have established performance-based standards to define products and processes with low chemical and particle emissions for use indoors.	GOLD	YES	GOLD
<b>RECYCLABILITY</b>	97%	95%	96%
<b>MATERIAL ANALYSIS</b>	<b>CONTENT</b> <b>RECYCLED</b>	<b>CONTENT</b> <b>RECYCLED</b>	<b>CONTENT</b> <b>RECYCLED</b>
PLASTIC	43.6% 90%	26.1% 90%	53.8% 90%
ALUMINIUM ALLOY	30.2% 10%	24.9% 10%	- -
STEEL	21.2% 80%	43.6% 80%	40.9% 80%
UPHOLSTERY	1% -	1.2% -	1.5% -
PU	4% -	4.3% -	3.8% -
<b>RECYCLED MATERIAL TOTAL</b>	<b>59%</b>	<b>61%</b>	<b>81%</b>
<b>CERTIFICATION</b>			
<b>EN 1335-2:2009</b>			
PART 2	YES	YES	YES
PART 3	YES	YES	YES
Office furniture. Office work chair. Safety requirements.			
<b>EN 5459-2:2008</b>	YES	-	-
Specification for performance requirements and tests for office furniture Office pedestal seating for use by persons weighing up to 150kg and for use up to 24 hours a day, including type-approval tests for individual components.			



## ENJOY ELITE / CLASSIC DIMENSIONS



	ELITE mm	CLASSIC mm
A	470 - 530	470 - 525
B	400 - 510	390 - 480
C	435 - 475	470
D	520 - 620	570 - 630
E	500	520
F	150 - 200	150 - 200
G	645	645

## PROJECT ENJOY DIMENSIONS



	PROJECT mm
A	500 - 560
B	400 - 510
C	480
D	550 - 600
E	500
F	150 - 200
G	650



www.scaune.ro

Antares România

Cluj-Napoca

Str. Piata 1 Mai nr. 4-5

tel.: +40 264 454 550

e-mail: antares@scaune.ro

Bucuresti

Int. Rocilor, 12-16, Sector 6

tel.: +40 213 615 151

